

## Why vote in GENERAL ELECTIONS?

Politics has an ever-greater impact on our lives. From the air that we breathe, to health, housing, education, social welfare and transport - politicians make the laws and policies which affect us



Policies for example  
on Education and  
Transport.

Policies for example  
on Health Services,  
eg Medical Cards.



Policies on  
Childcare and  
Social Welfare.

Vote in the General  
Election. We need TD's  
who will work on our  
concerns and be good  
for Ireland.



## >> REGISTRATION

How do I know I am registered?

- Check the current Register of Electors at your local Library, Post Office, Garda Station or Local Authority or on the Internet on [www.checktheregister.ie](http://www.checktheregister.ie)
- If your name is NOT on the register, get a Supplementary Registration Form (RFA2) from your Local Authority, Library, Post Office or Garda Station. The form can be downloaded from local authority websites or from [www.vote.ie](http://www.vote.ie)
- Complete the form and take it to your local Garda Station or Community Garda with some form of identification such as drivers licence or passport. Have the form stamped and signed.
- Post the completed form to your Local Authority Franchise Section, 15 working days before the date of the Election.

Prepared and printed by:  
The Vincentian Partnership for Social Justice,  
Ozanam House, 53 Mountjoy Square, Dublin 1.

Tel: 01 878 0425  
Email: [vpj@eircom.net](mailto:vpj@eircom.net)  
Websites: [www.vpsj.ie](http://www.vpsj.ie)  
[www.vote.ie](http://www.vote.ie)

Distributed by the National Active Citizenship Network.

# GENERAL ELECTIONS

Be Part of The Action!

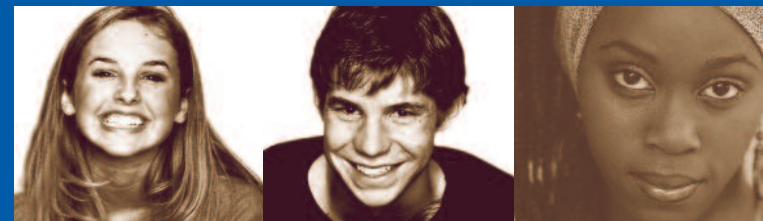
## YOUR VOTE



## YOUR VOICE



## YOUR POWER



Vote in General Elections

WHY? Read on...

# GENERAL ELECTIONS

Impact on you  
Your family  
Your community  
Your country

## WHY?

Because the Government  
has Responsibility for

o Environment

o Health

o Social Welfare

o Transport

o Housing

o Education

o Employment



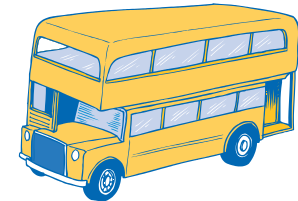
Environment



Health



Social Welfare



Transport



Housing



Employment



Education